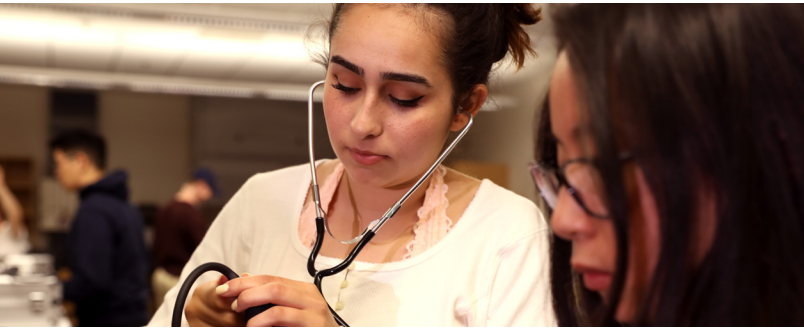




Santiago Canyon College



# INTER SESSION



# 20 22

JANUARY 3-30



# Santiago Canyon College

*What Happens Here Matters*

**JANUARY 3– JANUARY 30, 2022**

A complete list of classes is available at [www.sccollege.edu](http://www.sccollege.edu)

## Intersession 2022



### Message from the President

Welcome to the 2022 Intersession! This fast-paced, dynamic mini-semester is a great opportunity to take deep dive into an area of interest and/or a chance to complete an important course on your educational plan.

You have made a wise choice in selecting Santiago Canyon College to pursue your educational goals.

We're here to support you to:

- earn an associate degree,
- transfer to a four-year institution,
- update your existing technical and professional skills,
- earn a certificate for a new career, and/or
- complete a high school diploma, or an equivalency certificate.

SCC is proud to provide an inclusive environment that promotes equity, respect, and dignity; identifies and eliminates barriers to learning; and ensures engaging and meaningful learning. By enrolling at SCC, you become part of a campus enriched by students and faculty with unique ideas, values, beliefs, experiences, and identities that strengthen our college community.

As we continue to navigate through these unprecedented times, SCC recognizes the value of face-to-face learning and is committed to increasing the number of courses offered in face-to-face formats as well as offering exceptional online and remote instruction.

Collectively, the SCC community will continue to do its part to combat the spread of COVID-19 through practicing responsible guidelines outlined by the Centers for Disease Control and Prevention, the California Department of Public Health, the Orange County Health Care Agency, and our District.

Attending SCC empowers you to seek the opportunities you deserve and desire. What happens here matters.



Dr. Pamela Ralston  
President



**Santiago Canyon College**

8045 East Chapman Avenue • Orange, CA 92869 • 714-628-4900



# INTERSESSION 2022

Students not enrolled for Spring 2021 and Fall 2021 must complete an application online. Go to [www.sccollege.edu](http://www.sccollege.edu)

## INTERSESSION CALENDAR

November 2, 2021 – January 2, 2022 . . . . .	Online registration for CONTINUING students (students who attended Spring 2021 and/or Fall 2021)
November 8, 2021 – January 2, 2022 . . . . .	Online registration for NEW/RETURNING students
December 6, 2021 – January 2, 2022 . . . . .	Online registration for Special Admit (high school) students
December 13, 2021 – January 2, 2022 . . . . .	Winter Break Holiday
January 3, 2022 . . . . .	<b>INSTRUCTION BEGINS</b>
See <i>add authorization</i> . . . . .	Last date to add a course with instructor provided Add Authorization Code
January 4, 2022 . . . . .	Last day to drop with enrollment fee refund and no “W” grade
January 11, 2022 . . . . .	Last day to file Pass/No Pass
<i>Check section detail online</i> . . . . .	Last day to drop a course with a “W” grade
January 17, 2022 . . . . .	Martin Luther King’s Birthday - Holiday
January 30, 2022 . . . . .	<b>INSTRUCTION ENDS</b>
February 7, 2022 . . . . .	Full Spring 2022 semester instruction begins

### WHO is eligible to enroll for Intercession Classes?

- Continuing Students at SCC or SAC
- New and Returning Students
- High school graduates, high school students (with Special Admit form approval) or persons 18 years of age or older. **Note: Some courses require placement testing. Check catalog for prerequisites.**

### HOW do I apply for Intercession?

- Students enrolled for Spring 2021 or Fall 2021 need not apply; new and returning students may apply at [www.sccollege.edu](http://www.sccollege.edu)

### HOW do I enroll for Intercession Classes?

- Although the college may be closed during the holidays, WebAdvisor will be available for registration. **Note: No New Student or Returning Student applications will be processed when the college is closed (see calendar above).**

### PROBLEMS Registering?

- Did you attend SCC or SAC during the Spring 2021 or Fall 2021 semester?
- **No:** You need to submit an application prior to registering for classes. Go to [www.sccollege.edu](http://www.sccollege.edu)
- **Yes:** Continue with the following questions:
  - ✓ Have you completed the required prerequisites?  
If not, call Counseling at 714-628-4800.
  - ✓ Is this your third attempt for the class? (W’s also count)  
Please go to the Admissions & Records Office.

### DO I Need a Parking Permit for Intercession?

- **No:** However permits are required beginning with the start of full semester classes in February.

### NONDISCRIMINATION POLICY

The Rancho Santiago Community College District is committed to equal opportunity in educational programs, employment, and all access to institutional programs and activities.

The District, and each individual who represents the District, shall provide access to its services, classes, and programs without regard to national origin, religion, age, gender, gender identity, gender expression, race or ethnicity, color, medical condition, genetic information, ancestry, sexual orientation, marital status, physical or mental disability, pregnancy, or military and veteran status, or because he or she is perceived to have one or more of the foregoing characteristics, or based on association with a person or group with one or more of these actual or perceived characteristics.

The Chancellor shall establish administrative procedures that ensure all members of the college community can present complaints regarding alleged violations of this policy and have their complaints heard in accordance with the Title 5 regulations and those of other agencies that administer state and federal laws regarding nondiscrimination.

No District funds shall ever be used for membership, or for any participation involving financial payment or contribution on behalf of the District or any individual employed by or associated with it, to any private organization whose membership practices are discriminatory on the basis of national origin, religion, age, gender, gender identity, gender expression, race, color, medical condition, genetic information, ancestry, sexual orientation, marital status, physical or mental disability, pregnancy, or military and veteran status, or because he or she is perceived to have one or more of the foregoing characteristics, or because of his or her association with a person or group with one or more of these actual or perceived characteristics. Inquiries regarding compliance and/or grievance procedures may be directed to District’s Title IX Officer and/or Section 504/ADA Coordinator, 2323 N. Broadway, Santa Ana, CA 92706, 714-480-7490.

The *Class Schedule* is available in alternate formats to qualified students with disabilities. For more information call 714-628-4860 or come to the Disabled Students Programs and Services Center in E-105.

**CALL SCC ADMISSIONS FOR  
QUESTIONS OR PROBLEMS  
714-628-4901**

# HOW TO APPLY AND REGISTER

## STEP ONE:

To apply to Santiago Canyon College, complete an application online at [www.sccollege.edu](http://www.sccollege.edu). Click on the **APPLY** link. After submitting all of your information, you will receive a confirmation email from CCCApply. Within 3 business days, you will receive an email from Santiago Canyon College which will include your WebAdvisor login and registration information. Once you set up your password to log into your WebAdvisor account, you may view your registration date.

## STEP TWO:

Online Registration is open Monday–Sunday (24/7)

1. Go to [www.sccollege.edu](http://www.sccollege.edu) and click on the “WebAdvisor”
  2. From the Main Menu, click on the “Log In” tab at the top
  3. Log in with your WebAdvisor login and password
  4. Click on “Students”
  5. Click on “Register for Classes” link  
Click “continue”
  6. From the Search/Register for Sections page:
    - a. Select a Term – 2022SI – Intersession 2022
    - b. Select a Location
    - c. Choose your subjects
    - d. Click on the “Submit” button
  7. From the Section Selection Results page:
    - a. Select all of the sections that you are interested in by checking the boxes on the “Select” column
    - b. Click on the “Submit” button
  8. Your selected sections are now shown on the Registration Shopping Cart page:
    - a. In the “Action” column, choose “Register” for the sections that you wish to enroll in
  9. Click on the “Submit” button  
After you click “Submit,” you will be officially registered.
  10. Pay fees within 3 days to avoid being dropped from your courses (Weekends and holidays are included.) The day you register is your first day.
  11. You can view your results on the Registration Results page
  12. Pay fees and print receipt
  13. Log out
- \* For additional help, view the Student WebAdvisor Help Manual or WebAdvisor Log in Help Video.

## DROP FOR NON-PAYMENT POLICY

Enrollment fees must be paid IN FULL within 3 days of registration or all of your classes may be dropped and released to other students. The day you register is your first day. If you need assistance paying your enrollment fees and would like to apply for a Fee Waiver, go to [www.cccapply.org/money/california-college-promise-grant](http://www.cccapply.org/money/california-college-promise-grant). It is your responsibility to check your account balance and pay the amount owed.

## STUDENT RESPONSIBILITY TO DROP CLASSES

To avoid a “W” grade, students must drop classes on or before the day of the first class meeting. Students will not be automatically dropped for non-attendance or non-payment once Intersession begins. You must drop online. After the first day of the first class meeting, you will not be eligible to receive a refund for your classes nor will you be exempt from enrollment fees. Check drop date online or under section information on each course.

### FIRST CLASS MEETING

*Make sure you attend the first class meeting!*

Attendance at the first meeting of a class is advised because of enrollment demands. Any student not reporting to the first class meeting may be dropped from the roll sheet.

## MISSION STATEMENT

Santiago Canyon College is an innovative learning community dedicated to intellectual and personal growth. Our purpose is to foster student success and to help students achieve these core outcomes: to learn, to act, to communicate and to think critically. We are committed to maintaining standards of excellence and providing the following to our diverse community: courses, certificates, and degrees that are accessible, applicable, and engaging.

## WAIT LIST POLICY

You are not able to wait list more than one section of the same course. You cannot wait list a course that will conflict with another course. As seats become available, students will be moved into an open seat. **It is your responsibility to periodically check your class schedule online, or you may lose your place on the wait list.** You will be notified by email (it is your responsibility to make sure that your e-mail is up-to-date) **and will have 3 days to pay for the course or you may be dropped.** If your name remains on the wait list, you must attend the first class meeting and obtain an add authorization from the instructor to add the course. You must add under Student Planning. Your add authorization will be valid until the end of the add period.

## PAY FEES IMMEDIATELY

Fees must be paid within 3 days of registering for courses or you may be dropped for non-payment. The date that you register counts as the first day. As a general rule, Intersession 2020 refunds would only be given if students drop on or before the first class meeting.

- **Refunds:** Students will be eligible for a refund if they drop their course on or before the day of the first class meeting.
- **Pay Online or In Person** at the SCC Cashier’s Office. Payment by check, Visa, MasterCard, AMEX, and Discover are accepted. Mail checks to SCC Cashier’s Office, 8045 E. Chapman Avenue, Orange, CA 92869. **Do not mail cash!** Checks are payable to “RSCCD” and write your Student ID number on the check.
- **Enrollment Fee** per unit (all students) \$46.00
- **Non-Resident Tuition** per unit \$317.00  
(\$307.00 Tuition + \$10.00 Capital Outlay)
- Required of all out-of-state residents (students who have not resided in California for one year), and students who are non U.S. citizens. These fees are in addition to the \$46.00 per unit enrollment fee. Questions regarding residency determination may be referred to the Admissions and Records Office.
- **Intersession Student Health Fee:** \$16.00
- **Student Service Fee:** (optional) \$10.00  
Free for College Services  
(Photo ID, Library, student and instructional services)  
\$10.00 for college activities  
(Photo ID available in Cashier’s Office, E -102)
- **Material Fee:** Material fee may be required for a course. Check classes online for specific fees.
- No parking permit is required for Intersession

## PHOTOGRAPHY

Santa Ana College/Santiago Canyon College, a non-profit California Community College, reserves the right to use photography and video images of students and visitors, age 18 and older, taken on our property and at college-sponsored events for marketing and promotional purposes. Objection to the use of an individual’s photograph may be made in writing to Public Affairs and Publications, RSCCD District Office, 2323 N. Broadway, Suite 408, Santa Ana, CA 92706.

**Registration questions? Call 714-628-4901**

Can’t find the class you need? It may be waiting for you at **SANTA ANA COLLEGE**  
Classes for both SCC and SAC are listed online.

## SCC CLASS AND INSTRUCTION METHODS



**Online (O)**

Fully online instruction: Students are required to log in to Canvas by the first day of class for detailed information and required course work. [sccollege.edu/Canvas](https://www.sccollege.edu/Canvas). There will be no scheduled instructional meetings.



**Fully Online Live (OL)**

Fully Remote Live Instruction: Live streaming instruction via Zoom during the days and times indicated. Students log in to Canvas. [sccollege.edu/Canvas](https://www.sccollege.edu/Canvas). There will be no instruction on-campus.



**Online & On-Campus Meetings (H)**

On-Campus Hybrid Instruction: A combination of online instruction and on-campus meetings during the days and times indicated. Students log in to Canvas. [sccollege.edu/Canvas](https://www.sccollege.edu/Canvas).



**Virtual Hybrid (VH)**

Virtual Hybrid Instruction: A combination of online instruction and some live streaming instruction via Zoom during the days and times indicated. Students log in to Canvas. [sccollege.edu/Canvas](https://www.sccollege.edu/Canvas). There will be no instruction on-campus.



**On Campus (C)**

Face to Face: Classes are in person and on-campus classes with weekly scheduled meeting days and times as indicated.

### 2022 INTERSESSION COURSES:

<b>ANTHROPOLOGY (ANTH)</b>		<b>GEOGRAPHY AND THE ENVIRONMENT (GEOG)</b>	
ANTH 100, INTRODUCTION TO CULTURAL ANTHROPOLOGY . . . . .	5	GEOG 100, WORLD REGIONAL GEOGRAPHY . . . . .	7
ANTH 101, INTRODUCTION TO PHYSICAL ANTHROPOLOGY. . . . .	5	GEOG 101, INTRODUCTION TO THE NATURAL ENVIRONMENT . . . . .	7
<b>ART (ART)</b>		GEOG 101L, INTRODUCTION TO THE NATURAL ENVIROMENT LAB . . . . .	7
ART 100, INTRODUCTION TO ART CONCEPTS. . . . .	5	<b>HISTORY (HIST)</b>	
<b>ASTRONOMY (ASTR)</b>		HIST 101, WORLD CIVILIZATIONS TO THE 16TH CENTURY . . . . .	7
ASTR 102, INTRODUCTION TO STARS AND GALAXIES . . . . .	5	HIST 102, WORLD CIVILIZATIONS SINCE THE 16TH CENTURY . . . . .	7
<b>BIOLOGY (BIOL)</b>		HIST 120, THE UNITED STATES TO 1877 . . . . .	7
BIOL 109, FUNDAMENTALS OF BIOLOGY . . . . .	5	HIST 121, THE UNITED STATES SINCE 1865 . . . . .	8
BIOL 109L, FUNDAMENTALS OF BIOLOGY LABORATORY . . . . .	5	HIST 133, HISTORY OF CALIFORNIA . . . . .	8
BIOL 194, QUALITY AND REGULATORY COMPLIANCE IN BIOSCIENCES. . . . .	5	<b>KINESIOLOGY (KIN)</b>	
<b>BUSINESS (BUS)</b>		KIN 104, HEALTHFUL LIVING . . . . .	8
BUS 100, FUNDAMENTALS OF BUSINESS. . . . .	5	KIN 200, CONDITIONING FOR ATHLETES-MEN. . . . .	8
BUS 130, PERSONAL FINANCE . . . . .	5	KIN 202, CONDITIONING FOR ATHLETES-WOMEN. . . . .	8
<b>CHEMISTRY (CHEM)</b>		KIN 203, SPEED AND AGILITY-MEN . . . . .	8
CHEM 100, INTRODUCTORY CHEMISTRY . . . . .	5	<b>MATHEMATICS (MATH)</b>	
<b>CHILD DEVELOPMENT (CDEV)</b>		MATH 080, INTERMEDIATE ALGEBRA . . . . .	8
CDEV 107, CHILD GROWTH AND DEVELOPMENT (DS1). . . . .	6	MATH 105, MATHEMATICS FOR LIBERAL ARTS STUDENTS . . . . .	8
CDEV 110, CHILD, FAMILY AND COMMUNITY (DS2). . . . .	6	MATH 140, COLLEGE ALGEBRA . . . . .	8
<b>CINEMA STUDIES (CINE)</b>		MATH 171, PRECALCULUS AND TRIGONOMETRY. . . . .	8
CINE 103, HISTORY OF FILM TO 1945. . . . .	6	MATH 180, SINGLE VARIABLE CALCULUS I . . . . .	8
CINE 104, HISTORY OF FILM FROM 1945 TO PRESENT. . . . .	6	MATH 219, STATISTICS AND PROBABILITY. . . . .	9
<b>COMMUNICATION (COMM)</b>		<b>PHILOSOPHY (PHIL)</b>	
COMM 100, INTRODUCTION TO INTERPERSONAL COMMUNICATION . . . . .	6	PHIL 106, INTRODUCTION TO PHILOSOPHY . . . . .	9
COMM 110, PUBLIC SPEAKING . . . . .	6	<b>POLITICAL SCIENCE (POLT)</b>	
<b>COUNSELING (CNSL)</b>		POLT 101, AMERICAN GOVERNMENT AND POLITICS . . . . .	9
CNSL 101, EDUCATIONAL, PERSONAL, CULTURAL, AND CAREER . . . . .	6	<b>PSYCHOLOGY (PSYC)</b>	
EXPLORATION . . . . .	6	PSYC 100, INTRODUCTION TO PSYCHOLOGY. . . . .	9
CNSL 116, CAREER/LIFE PLANNING AND PERSONAL EXPLORATION . . . . .	6	PSYC 157, INTRODUCTION TO CHILD PSYCHOLOGY . . . . .	9
<b>EARTH SCIENCES (ERTH)</b>		PSYC 240, INTRODUCTION TO SOCIAL PSYCHOLOGY . . . . .	9
ERTH 200, GEOLOGY OF CALIFORNIA . . . . .	6	PSYC 250, INTRODUCTION TO ABNORMAL PSYCHOLOGY . . . . .	9
<b>ENGLISH (ENGL)</b>		<b>SOCIOLOGY (SOC)</b>	
ENGL 100, FRESHMAN COMPOSITION WITH INTEGRATED SUPPORT. . . . .	6	SOC 100, INTRODUCTION TO SOCIOLOGY . . . . .	9
ENGL 101, FRESHMAN COMPOSITION. . . . .	7	SOC 130, RELATIONSHIPS, MARRIAGES, AND FAMILY DYNAMICS . . . . .	9
ENGL 103, CRITICAL THINKING AND WRITING. . . . .	7		
<b>GENDER-SEXUALITY-WOMEN'S ST (GSWS)</b>			
GSWS 101, INTRODUCTION TO WOMEN'S STUDIES. . . . .	7		

## ANTHROPOLOGY (ANTH)

**ANTH 100, INTRODUCTION TO CULTURAL ANTHROPOLOGY** 3.0 UNITS  
*A cross-cultural survey of the major areas of cultural anthropology including subsistence patterns, economic and political systems, family and kinship, religion, and cultural change. Also includes contemporary issues facing humankind such as the environment, resource depletion, ethnic conflict, globalization, and warfare. Emphasis is on understanding cultural diversity and cultural universals.*

**O** 07002 Yang S CANVAS Full Semester  
 Students are required to log in to Canvas by the first day of class for detailed information and required course work. [sccollege.edu/Canvas](http://sccollege.edu/Canvas). There will be no scheduled instructional meetings.

**ANTH 101, INTRODUCTION TO PHYSICAL ANTHROPOLOGY** 3.0 UNITS  
*An introduction to humankind's place in nature, including evolutionary theory, principles of genetics, primate evolution and behavior, fossil evidence for human evolution, human biology and variation, growth and adaptability, and biomedical anthropology. Includes practical application of biological anthropology to human problems. Field trips may be required.*

**O** 07004 Maggini G CANVAS Full Semester  
 Students are required to log in to Canvas by the first day of class for detailed information and required course work. [sccollege.edu/Canvas](http://sccollege.edu/Canvas). There will be no scheduled instructional meetings.

## ART (ART)

**ART 100, INTRODUCTION TO ART CONCEPTS** 3.0 UNITS  
*A study of the visual arts in relation to both personal and cultural expressions. Fundamentals of visual organization, color theory, terminology, historical art movements and concepts will be studied. Students are required to visit an art museum during the semester. Required for art majors.*

**H** 07015 Miller R HYBRID 01/03-01/27  
 9:00a-12:20p M W Th Miller R D-101  
 On-Campus Hybrid Instruction. A combination of online instruction and on-campus meetings during the days and times indicated. Students log in to Canvas. [sccollege.edu/Canvas](http://sccollege.edu/Canvas).

## ASTRONOMY (ASTR)

**ASTR 102, INTRODUCTION TO STARS AND GALAXIES** 3.0 UNITS  
*Surveys the development of astronomy, current research and observations of stars, galaxies and large-scaled structures in the universe. Explores light and gravity to understand the properties and evolution of stars, neutron stars, black holes, galaxies and the universe structures and changes.*

**C** 04814 9:00a-12:20p M Tu W Th Barembaum M SC-104 01/03-01/27  
 This class will meet on campus

## BIOLOGY (BIOL)

**BIOL 109, FUNDAMENTALS OF BIOLOGY** 3.0 UNITS  
*Principles of biology stressing the relationship of all organisms from anatomical, physiological and ecological points of view. Includes cell machinery, genetics, reproduction, embryology, animal behavior, botany, ecology, evolution and human physiology. Designed for non-biology majors.*

Recommended Preparation: Biology 109L

**O** 04941 Smith M CANVAS Full Semester  
 Fully Online Instruction. Students are required to log in to Canvas by the first day of class for detailed information and required course work. [sccollege.edu/Canvas](http://sccollege.edu/Canvas). There will be no scheduled instructional meetings.

**O** 04942 Taylor M CANVAS Full Semester  
 Fully Online Instruction. Students are required to log in to Canvas by the first day of class for detailed information and required course work. [sccollege.edu/Canvas](http://sccollege.edu/Canvas). There will be no scheduled instructional meetings.

### CLASS SCHEDULE SUBJECT TO CHANGE

The Rancho Santiago Community College District has made every reasonable effort to determine that everything stated in this class schedule is accurate. Courses and programs offered, together with other matters contained herein, are subject to change without notice by the administration of the Rancho Santiago Community College District for reasons related to student enrollment, level of financial support, or for any other reason, at the discretion of the district.

**BIOL 109L, FUNDAMENTALS OF BIOLOGY LABORATORY** 1.0 UNIT  
*Laboratory experiments to identify and illustrate significant organisms and their structures. Emphasis is placed on the relationship of all organisms from an anatomical, physiological, and ecological framework. Content correlates to Biology 109/109H lecture material. Field trips required.*

Required concurrent or previous courses: Biology 109/109H or concurrent enrollment.

**C** 08621 9:00a-12:20p M Tu W Th Johnson K SC-132 01/03-01/27  
 This class will meet on campus

**BIOL 194, QUALITY AND REGULATORY COMPLIANCE IN BIOSCIENCES** 2.0 UNITS  
*This course will cover quality assurance and regulatory compliance for the biosciences industries. Topics will span quality control and Federal Drug Administration (FDA) regulations for the biotechnology, biopharmaceutical, biomedical device and food industries. Theories and application of quality assurance and quality control will be presented and several different quality systems will be discussed such as GMP (good manufacturing practices), ISO9000 (International Standards Organization), Six Sigma and Lean.*

**O** 04944 Batth N CANVAS Full Semester  
 Fully Online Instruction. Students are required to log in to Canvas by the first day of class for detailed information and required course work. [sccollege.edu/Canvas](http://sccollege.edu/Canvas). There will be no scheduled instructional meetings.

## BUSINESS (BUS)

**BUS 100, FUNDAMENTALS OF BUSINESS** 3.0 UNITS  
*An introduction to the basic fundamentals of business. A survey of marketing management, production, accounting, finance, and economics and how they interrelate in the business environment.*

**O** 04636 Deeley S CANVAS Full Semester  
 Fully Online Instruction. Students are required to log in to Canvas by the first day of class for detailed information and required course work. [sccollege.edu/Canvas](http://sccollege.edu/Canvas). There will be no scheduled instructional meetings.

**BUS 130, PERSONAL FINANCE** 3.0 UNITS  
*This course is an integrative approach to personal finance focusing on practical financial decision making as well as the social, psychological, and physiological contexts in which those decisions are made. Students will examine their relationships with money, set personal goals, and develop a plan to meet those goals. Topics include consumerism, debt, healthcare, investing, retirement, long-term care, disability, death, and taxes.*

**O** 04637 Salcido A CANVAS Full Semester  
 Fully Online Instruction. Students are required to log in to Canvas by the first day of class for detailed information and required course work. [sccollege.edu/Canvas](http://sccollege.edu/Canvas). There will be no scheduled instructional meetings.

## CHEMISTRY (CHEM)

**CHEM 100, INTRODUCTORY CHEMISTRY** 4.0 UNITS  
*This course prepares students for Biology and Chemistry 200 by exploring the basic concepts of matter such as: atomic structure, formulas, equation writing, nomenclature, gases, and kinetic theory. Properties of solutions and the mole concept in quantitative chemistry will be emphasized.*

Prerequisite: Mathematics 080.

**C** 04819 9:00a-12:20p M Tu W Th Piotrowski C SC-226 01/03-01/27  
 12:40p-4:00p M Tu W Th Piotrowski C SC-225  
 This class will meet on campus

### Apprenticeship Program

Santiago Canyon College offers courses for state-indentured apprentices in the following programs:

- Carpentry
- Cosmetology
- Electrician
- Maintenance Mechanic
- Power Lineman
- Operating Engineer
- Surveying

For information on the application process and who to contact visit [www.sccollege.edu/apprenticeship](http://www.sccollege.edu/apprenticeship)

For information on Journeyman classes call:  
 OC Carpenters JATC ..... 714-571-0449  
 Operating Engineers JATC..... 562-695-0611



## CHILD DEVELOPMENT (CDEV)

**CDEV 107, CHILD GROWTH AND DEVELOPMENT (DS1) 3.0 UNITS**  
*This introductory course examines the interactions between maturational processes and environmental factors and the major physical, psychosocial, and cognitive/language developmental milestones for children, both typical and atypical, from conception through adolescence. While studying developmental theory and investigative research methodologies, students will observe children, evaluate individual differences, and analyze characteristics of development at various stages. Field-based assignments may be required. No credit for students who have taken Psychology 157. A negative TB test result and state-mandated immunizations are required for some fieldwork assignments and certificate completion.*

**04639** Deusenberry J CANVAS Full Semester  
 Fully Online Instruction. Students are required to log in to Canvas by the first day of class for detailed information and required course work. [sccollege.edu/Canvas](http://sccollege.edu/Canvas). There will be no scheduled instructional meetings.

**CDEV 110, CHILD, FAMILY AND COMMUNITY (DS2) 3.0 UNITS**  
*This course examines processes of socialization focusing on the interrelationship of family, school, and community and the influence of multiple societal contexts. Explores the role of collaboration between family, community, and schools in supporting children's development. Field trips and field-based assignments may be required.*

**04642** 6:30p-9:30p W Seneviratne A CANVAS Full Semester  
 Virtual Hybrid Instruction. A combination of online instruction and some live streaming instruction via Zoom during the days and times indicated. Students log in to Canvas. [sccollege.edu/Canvas](http://sccollege.edu/Canvas). -† There will be no instruction on-campus.

## CINEMA STUDIES (CINE)

**CINE 103, HISTORY OF FILM TO 1945 3.0 UNITS**  
*A survey course exploring film as an art form and developing an appreciation of historical, artistic and technical advances from the 1890s to 1945.*

**04645** Echols D CANVAS Full Semester  
 Fully Online Instruction. Students are required to log in to Canvas by the first day of class for detailed information and required course work. [sccollege.edu/Canvas](http://sccollege.edu/Canvas). There will be no scheduled instructional meetings.

**CINE 104, HISTORY OF FILM FROM 1945 TO PRESENT 3.0 UNITS**  
*A lecture/visual aids course exploring film as an art form and developing appreciation of historical, artistic and technical advances.*

**04647** Echols D CANVAS Full Semester  
 Fully Online Instruction. Students are required to log in to Canvas by the first day of class for detailed information and required course work. [sccollege.edu/Canvas](http://sccollege.edu/Canvas). There will be no scheduled instructional meetings.

## COMMUNICATION (COMM)

**COMM 100, INTRODUCTION TO INTERPERSONAL COMMUNICATION 3.0 UNITS**  
*Introduction to communication skills of listening, perception, language usage, non-verbal communication, and conflict management; emphasizing methods of overcoming barriers to effective communication in interpersonal relationships.*

Recommended Preparation: Concurrent enrollment in English 101/101H

**04299** 11:30a-2:50p M Tu W Th Staff H-115 Full Semester  
 This class will meet on campus.

**04286** Kubicka-Miller T CANVAS Full Semester  
 Students are required to log in to Canvas by the first day of class for detailed information and required course work. [sccollege.edu/Canvas](http://sccollege.edu/Canvas). There will be no scheduled instructional meetings.

**04298** De Carbo M CANVAS Full Semester  
 Students are required to log in to Canvas by the first day of class for detailed information and required course work. [sccollege.edu/Canvas](http://sccollege.edu/Canvas). There will be no scheduled instructional meetings.

**04300** Castellanos R CANVAS Full Semester  
 Students are required to log in to Canvas by the first day of class for detailed information and required course work. [sccollege.edu/Canvas](http://sccollege.edu/Canvas). There will be no scheduled instructional meetings.

**04303** Castellanos R CANVAS Full Semester  
 Students are required to log in to Canvas by the first day of class for detailed information and required course work. [sccollege.edu/Canvas](http://sccollege.edu/Canvas). There will be no scheduled instructional meetings.

**COMM 110, PUBLIC SPEAKING 3.0 UNITS**  
*Teaches critical thinking skills in relation to public speaking. Emphasis on the process, principles and major facets of critical thinking with practice through oral presentations.*

**04360** Kubicka-Miller J CANVAS Full Semester  
 Fully Online Instruction. Students are required to log in to Canvas by the first day of class for detailed information and required course work. [sccollege.edu/Canvas](http://sccollege.edu/Canvas). Students will sign up for meeting times with the Professor.

**04362** Kubicka-Miller J CANVAS Full Semester  
 Fully Online Instruction. Students are required to log in to Canvas by the first day of class for detailed information and required course work. [sccollege.edu/Canvas](http://sccollege.edu/Canvas). There will be no scheduled instructional meetings.

## COUNSELING (CNLS)

**CNLS 101, EDUCATIONAL, PERSONAL, CULTURAL, AND CAREER EXPLORATION 3.0 UNITS**

*Designed to promote academic and career success by exploring student development from an educational, sociological, psychological and physiological perspective. Exploration of higher education opportunities, potential career interests and a focus on educational planning. Recommended for students planning to complete an associate degree and/or transfer to a university. Field trips may be required.*

**08469** Staff CANVAS Full Semester  
 Fully Online Instruction. Students are required to log in to Canvas by the first day of class for detailed information and required course work. [sccollege.edu/Canvas](http://sccollege.edu/Canvas). There will be no scheduled instructional meetings.

**CNLS 116, CAREER/LIFE PLANNING AND PERSONAL EXPLORATION 3.0 UNITS**  
*The course is designed to assist students in successfully establishing and achieving education, career and life goals. Students are guided through a reflective process that focuses on values, interests, personality, skills and learning styles. Career and education options are researched, and students are exposed to college resources and support services. Decision making models and goal setting techniques are examined and will be used to develop short and long term education, career and life plans. Materials fee required.*

Material Fee(s): \$16.00

**08486** Staff CANVAS Full Semester  
 Fully Online Instruction. Students are required to log in to Canvas by the first day of class for detailed information and required course work. [sccollege.edu/Canvas](http://sccollege.edu/Canvas). There will be no scheduled instructional meetings.

## EARTH SCIENCES (ERTH)

**ERTH 200, GEOLOGY OF CALIFORNIA 3.0 UNITS**

*Introduction to the geology of California emphasizing tectonic processes, geologic structures, physiographic provinces, landforms, natural resources, geologic history, rocks and minerals, and the natural hazards of our state. Appropriate for students in any major. Field trips may be required.*

Recommended Preparation: Earth Sciences 100, 120 or 121 or Geography 101

**07658** Daneshmand A CANVAS 01/03-01/28  
 Fully Online Instruction. Students are required to log in to Canvas by the first day of class for detailed information and required course work. [sccollege.edu/Canvas](http://sccollege.edu/Canvas). There will be no scheduled instructional meetings.

## ENGLISH (ENGL)

**ENGL 100, FRESHMAN COMPOSITION WITH INTEGRATED SUPPORT 4.5 UNITS**

*This course is designed for students who want to develop competence in college-level composition through extended instruction and practice. Students read, analyze, discuss, and think critically using various sources in order to compose in a variety of academic, professional, and civic contexts, including digital environments. Additional hours in the Writing Center are required for practice in refining sentence skills, grammar, research, study habits, and reading strategies.*

Prerequisite: American College English 116 or English N59 or qualifying profile from English placement process

**07038** Gonzalez S CANVAS Full Semester  
 Fully Online Instruction. Students are required to log in to Canvas by the first day of class for detailed information and required course work. [sccollege.edu/Canvas](http://sccollege.edu/Canvas). There will be no scheduled instructional meetings.

**The California College Promise Grant (formerly Board of Governor Fee Waiver) and Federal Financial Aid is available to those who are eligible. If a student completes units during the Intersession, they will be paid for those units combined with any Spring term units; as Intersession is treated as part of the Spring term. For more information and to apply please go to the financial aid link on SCC website under Students area or inquire with the Financial Aid Office located at Room E-104.**

SECT #	TIME	DAY	INSTRUCTOR	MODE	DATES
--------	------	-----	------------	------	-------

**ENGL 101, FRESHMAN COMPOSITION** **4.0 UNITS**  
*This course emphasizes expository and argumentative essays and the research paper, allowing students to gain familiarity with learning approaches connected to successful writing and to compose in a variety of academic, professional, and civic contexts, including digital environments.*

Prerequisite: English 061 or ACE 116 or qualifying profile from English placement process

**C** 07043 8:00a-12:30p M Tu W Th Roe M H-124 01/03-01/27

**O** 07041 Hall K CANVAS Full Semester  
 Students are required to log in to Canvas by the first day of class for detailed information and required course work. [sccollege.edu/Canvas](http://sccollege.edu/Canvas). There will be no scheduled instructional meetings.

**ENGL 103, CRITICAL THINKING AND WRITING** **4.0 UNITS**  
*This course focuses on developing critical thinking, reading, and writing skills by studying established argumentative methods and models and applying them to contemporary issues. Emphasis will be on logical reasoning and analytical and argumentative skills necessary for critical writing.*

Prerequisite: English 101/101H

**OL** 07045 8:00a-12:30p M Tu W Th Elchlepp E CANVAS 01/03-01/27

Fully Remote Live Instruction. Live streaming instruction via Zoom during the days and times indicated. Students log in to Canvas. [sccollege.edu/Canvas](http://sccollege.edu/Canvas). There will be no instruction on-campus.

## GENDER-SEXUALITY-WOMEN'S ST (GSWS)

**GSWS 101, INTRODUCTION TO WOMEN'S STUDIES** **3.0 UNITS**  
*A multicultural survey of social trends, issues, opportunities, and topics of special interest to women. Discussion includes sex, sex-role stereotyping, family problems, work, law, gender equity, physical and mental health, feminism, rape, and women in arts, sciences, history, and business. Field trips may be required.*

**O** 07143 Govea-Von Velasco M CANVAS Full Semester

Students are required to log in to Canvas by the first day of class for detailed information and required course work. [sccollege.edu/Canvas](http://sccollege.edu/Canvas). There will be no scheduled instructional meetings.

### INSTITUTIONAL STUDENT LEARNING OUTCOMES

To achieve our mission, SCC has identified Institutional Learning Outcomes with four core competencies: Learn, Communicate, Act, and Think. Students will be able to:

Learn—About Self and Others, Academic and Professional Issues

- Take responsibility for one's own learning and wellbeing.
- Learn about one's chosen academic major, while creating connections across disciplines.
- Learn about professional conduct, including workplace and community ethics, conflict management, and teamwork.

Communicate—With Clarity & Accuracy & in Diverse Environments

- Communicate ideas in a clear and articulate manner.
- Communicate accurately to diverse audiences.
- Communicate in various formats using diverse technologies.

Act—With Awareness of Self & the Local &

Global Community of Persons

- Act to maintain one's dignity and self-respect.
- Act as a responsible community member who treats others with respect, civility, empathy, honesty and dignity.
- Act to increase the wellbeing of the global community by maintaining cultural literacy, lifelong learning, ethical consideration of each other, and the environment we all share.

Think—Critically, Creatively, and Reflectively

- Critically analyze, evaluate, organize and use quantitative and qualitative data to solve problems and develop logical models, hypotheses and beliefs.
- Creatively use concepts to making learning relevant.
- Reflectively assess one's values, assumptions, and attitudes.

SECT #	TIME	DAY	INSTRUCTOR	MODE	DATES
--------	------	-----	------------	------	-------

## GEOGRAPHY AND THE ENVIRONMENT (GEOG)

**GEOG 100, WORLD REGIONAL GEOGRAPHY** **3.0 UNITS**  
*The study of major world political and natural regions. The location of the regions on earth, the physical and cultural elements that lend the regions their identities, and ways in which these elements relate to the regions' inhabitants and economies.*

**O** 05517 King C CANVAS Full Semester

Students are required to log in to Canvas by the first day of class for detailed information and required course work. [sccollege.edu/Canvas](http://sccollege.edu/Canvas). There will be no scheduled instructional meetings.

**GEOG 101, INTRODUCTION TO THE NATURAL ENVIRONMENT** **3.0 UNITS**  
*Introduction to the physical elements of geography: maps, earth/sun relationships, meteorology and climatology, natural vegetation, soils, and geomorphology. Former Title: Physical Geography (2021)*

**O** 05515 VU V CANVAS Full Semester

Students are required to log in to Canvas by the first day of class for detailed information and required course work. [sccollege.edu/Canvas](http://sccollege.edu/Canvas). There will be no scheduled instructional meetings.

**GEOG 101L, INTRODUCTION TO THE NATURAL ENVIRONMENT LAB** **1.0 UNIT**  
*Laboratory exercises and experiments designed to explore and understand the primary areas of physical geography. Exercises and applications related to map scales and projections, stereoscopic, topographic and aerial photo interpretation, meteorological tools and models and weather prognostication, geomorphologic models and processes, and landform interpretation. Field trips may be required. Former Title: Physical Geography (2021)*

Required Concurrent Or Previous Courses: Geography 101 or Geography 101 Honors

**O** 05516 Engstrom V CANVAS Full Semester

Students are required to log in to Canvas by the first day of class for detailed information and required course work. [sccollege.edu/Canvas](http://sccollege.edu/Canvas). There will be no scheduled instructional meetings.

## HISTORY (HIST)

**HIST 101, WORLD CIVILIZATIONS TO THE 16TH CENTURY** **3.0 UNITS**  
*Examines the development of world civilizations and their interrelationships through analysis of their basic ideas, institutions, personalities, and artistic achievements from the earliest beginnings to the sixteenth century.*

**O** 05894 Petrocelli R CANVAS Full Semester

Fully Online Instruction. Students are required to log in to Canvas by the first day of class for detailed information and required course work. [sccollege.edu/Canvas](http://sccollege.edu/Canvas). There will be no scheduled instructional meetings.

**HIST 102, WORLD CIVILIZATIONS SINCE THE 16TH CENTURY** **3.0 UNITS**  
*Broad historical study of world civilizations and their interrelationships from the 16th century to the present. Includes ideas, institutions, personalities, and artistic achievements which have contributed to present day society.*

**O** 05897 Petrocelli R CANVAS Full Semester

Students are required to log in to Canvas by the first day of class for detailed information and required course work. [sccollege.edu/Canvas](http://sccollege.edu/Canvas). There will be no scheduled instructional meetings.

**HIST 120, THE UNITED STATES TO 1877** **3.0 UNITS**  
*Examines the major political, economic, intellectual, and social forces shaping American life from the colonial period through Reconstruction. Credit will not be given to students who already earned credit for History 122.*

**O** 05899 Howell S CANVAS Full Semester

Students are required to log in to Canvas by the first day of class for detailed information and required course work. [sccollege.edu/Canvas](http://sccollege.edu/Canvas). There will be no scheduled instructional meetings.

### ARE YOU READY?

- Completed 30 Units?
- On Track to Graduate?
- Planning to Transfer?
- Qualify for a Certificate?

**Meet With A Counselor Now To:**

1. Check Your Progress
2. Complete a Graduation Petition

**Visit Counseling in D-106 or call 714-628-4800**

**DEADLINE TO PETITION IS MARCH 11**



## FIRST CLASS MEETING

**Make sure you attend the first class meeting!**

Attendance at the first meeting of a class is advised because of enrollment demands. Any student not reporting to the first class meeting may be dropped from the roster.

**HIST 121, THE UNITED STATES SINCE 1865** 3.0 UNITS

A critical analysis of American history. Includes industrial and technological development, the changing nature of society, cultural patterns, domestic politics, artistic attainments, and America's expanded world role. Credit will not be given to students who already earned credit for History 122. Former Title: Honors the United States Since 1865 (2020)

**C** 05898 11:35a-2:55p M Tu W Th Reed S H-333 Full Semester  
This class will meet on campus.

**HIST 133, HISTORY OF CALIFORNIA** 3.0 UNITS

An examination of the major social, political, and economic developments that have shaped California history from the indigenous period to the present. Special attention given to regional issues, ethnic or cultural groups, constitutional matters, cultural change, and California's connection with the Pacific Basin.

**O** 05900 Rabii-Rakin N CANVAS Full Semester  
Students are required to log in to Canvas by the first day of class for detailed information and required course work. [sccollege.edu/Canvas](http://sccollege.edu/Canvas). There will be no scheduled instructional meetings.

## KINESIOLOGY (KIN)

**KIN 104, HEALTHFUL LIVING** 3.0 UNITS

Comprehensive look at factors that impact people's health, longevity and lifetime wellness. Areas covered will be personal fitness, nutrition, drugs, alcohol and tobacco, AIDS and sexually transmitted diseases, and degenerative diseases including cancer, heart disease, strokes and diabetes.

**O** 04201 Woodhead I CANVAS Full Semester  
Fully Online Instruction. Students are required to log in to Canvas by the first day of class for detailed information and required course work. [sccollege.edu/Canvas](http://sccollege.edu/Canvas). There will be no scheduled instructional meetings.

**KIN 200, CONDITIONING FOR ATHLETES-MEN** 0.5 - 1.0 UNITS

An instructor supervised exercise program designed for athletes who participate in men's sports. Emphasis will be on the development of speed, endurance, flexibility, and strength. Students may take a maximum of 350 hours of any team sport, team off season course or conditioning course per academic year.

**C** 04202 3:00p-6:35p M Tu W Th F Johnson T G-106-A 01/03-01/21  
This class will meet on campus.

**KIN 202, CONDITIONING FOR ATHLETES-WOMEN** 0.5 - 1.0 UNITS

An instructor supervised exercise program designed for athletes who participate in women's sports. Emphasis will be on the development of speed, endurance, flexibility, and strength. Students may take a maximum of 350 hours of any team sport, team off season course or conditioning course per academic year.

**C** 04203 1:30p-5:05p M Tu W Th F Camarco L SOFLL 01/03-01/21  
This class will meet on campus.

**KIN 203, SPEED AND AGILITY-MEN** 0.5 - 1.0 UNITS

This class is designed for male athletes to increase running speed. This class includes instruction on linear speed, non-linear speed, and jumping ability using state of the art plyometric training and speed specific training tools. Students may take a maximum of 350 hours of any team sport, team off season course or conditioning course per academic year.

**C** 04204 2:30p-5:05p M Tu W Th F Dixon T G-106-A Full Semester  
This class will meet on campus.

## MATHEMATICS (MATH)

**MATH 080, INTERMEDIATE ALGEBRA** 5.0 UNITS

A second course in algebra that includes systems of equations, inequalities, graphs and functions, radicals, quadratics, polynomials, rational expressions, exponential and logarithmic functions, conics, and problem solving. This course meets the prerequisites for Math 140 and 160.

**O** 04822 Jones V CANVAS 01/03-01/28  
Fully Online Instruction. Students are required to log in to Canvas by the first day of class for detailed information and required course work. [sccollege.edu/Canvas](http://sccollege.edu/Canvas). There will be no scheduled instructional meetings. This class uses open sources where the textbook and the access code for online instruction are free to the student. Details about the online materials may be emailed to students up to one week before the first class meeting. IBA - This course's assignments may be assigned, completed, and submitted via the internet.

**MATH 105, MATHEMATICS FOR LIBERAL ARTS STUDENTS** 4.0 UNITS

An overview of mathematics for the liberal arts student. Topics will include problem solving, financial management, probability, statistics, and selected other topics such as set theory, geometry, logic, mathematical modeling, and the history of mathematics.

Prerequisite: Mathematics 080 or 085 or 086 or qualifying profile from the mathematics placement process.

**O** 04823 Cedeno J CANVAS 01/03-01/28

Fully Online Instruction. Students are required to log in to Canvas by the first day of class for detailed information and required course work. [sccollege.edu/Canvas](http://sccollege.edu/Canvas). There will be no scheduled instructional meetings. This class uses open sources where the textbook and the access code for online instruction are free to the student. Details about the online materials may be emailed to students up to one week before the first class meeting. IBA - This course's assignments may be assigned, completed, and submitted via the internet.

**MATH 140, COLLEGE ALGEBRA** 4.0 UNITS

Survey of advanced topics in algebra: equations, inequalities and functions involving polynomials, rationals, exponentials, and logarithms with applications and graphing; sequences and series.

Prerequisite: Mathematics 080 or Mathematics 085 or qualifying profile from the Mathematics placement process.

**O** 04824 Frost A CANVAS 01/03-01/28

Fully Online Instruction. Students are required to log in to Canvas by the first day of class for detailed information and required course work. [sccollege.edu/Canvas](http://sccollege.edu/Canvas). There will be no scheduled instructional meetings. This class uses open sources where the textbook and the access code for online instruction are free to the student. Details about the online materials may be emailed to students up to one week before the first class meeting. IBA - This course's assignments may be assigned, completed, and submitted via the internet.

**MATH 171, PRECALCULUS AND TRIGONOMETRY** 5.0 UNITS

Study of polynomial, rational, absolute value, exponential, logarithmic, and trigonometric functions, their graphs and applications. Use of trigonometric identities. Polar coordinates and complex numbers, parametric equations, and analytic geometry. An introduction to vectors, sequences, series, and limits. Preparation for the Calculus sequence.

Prerequisite: Mathematics 080 or Mathematics 085 or qualifying profile from Mathematics placement process.

**C** 04826 8:00a-1:50p M Tu W Th Cotter M SC-111 01/03-01/27

This class will meet on campus. This class uses open sources where the textbook and the access code for online instruction are free to the student. Details about the online materials may be emailed to students up to one week before the first class meeting. IBA - This course's assignments may be assigned, completed, and submitted via the internet.

**O** 04825 Diaz D CANVAS 01/03-01/28

Fully Online Instruction. Students are required to log in to Canvas by the first day of class for detailed information and required course work. [sccollege.edu/Canvas](http://sccollege.edu/Canvas). There will be no scheduled instructional meetings. This class uses open sources where the textbook and the access code for online instruction are free to the student. Details about the online materials may be emailed to students up to one week before the first class meeting. IBA - This course's assignments may be assigned, completed, and submitted via the internet.

**MATH 180, SINGLE VARIABLE CALCULUS I** 4.0 UNITS

Limits and continuity, derivatives and integrals of algebraic, trigonometric, and other transcendental functions. Applications including extrema tests, related rates and areas.

Prerequisite: Mathematics 170 or Mathematics 171 or qualifying profile from the mathematics placement process.

**C** 04827 8:00a-12:30p M Tu W Th Wagner J SC-110 01/03-01/27

This class will meet on campus

## IT'S NOT JUST "HARMLESS WATER VAPOR"

E-cigarette aerosol contains at least 10 chemicals on California's Prop 65 list of chemicals known to cause cancer, birth defects or other reproductive harm.

TOLUENE  
ACETALDEHYDE  
CADMIUM BENZENENE  
FORMALDEHYDE  
ISOPRENE NICKEL  
LEAD NICOTINE  
N-NITROSONORNICOTINE



GONIEWICZ, M.L., ET AL., LEVELS OF SELECTED CARCINOGENS AND TOXICANTS IN VAPOUR FROM ELECTRONIC CIGARETTES. TOBACCO CONTROL, 2014, 23(2), P. 133-9.  
WILKINS, M., ET AL., METAL AND SILICATE PARTICLES INCLUDING NANOPARTICLES ARE PRESENT IN ELECTRONIC CIGARETTE CARTOMIZER FLUID AND AEROSOL.  
PLoS ONE, 2015, 10(3), P. E23799.  
CALIFORNIA OFFICE OF ENVIRONMENTAL HEALTH HAZARD ASSESSMENT, SAFE DRINKING WATER AND TOXIC ENFORCEMENT ACT OF 1986, CURRENT PROPOSITION 65 LIST.  
©2014 CALIFORNIA DEPARTMENT OF PUBLIC HEALTH

SECT #	TIME	DAY	INSTRUCTOR	MODE	DATES
--------	------	-----	------------	------	-------

**MATH 219, STATISTICS AND PROBABILITY 4.0 UNITS**

*Introduction course in statistical reasoning. Includes descriptive statistics, graphical displays of data, probability and sampling distributions, confidence intervals, hypothesis testing, regression, contingency tables, ANOVA, and non-parametric statistics. Includes the use of technology.*

Prerequisite: Mathematics 080, 086 or qualifying profile from the mathematics placement process.

**C** 04830 8:00a-12:30p M Tu W Th Wilson J SC-133 01/03-01/27

This class will meet on campus. This class uses open sources where the textbook and the access code for online instruction are free to the student. Details about the online materials may be emailed to students up to one week before the first class meeting. IBA - This course's assignments may be assigned, completed, and submitted via the internet.

**O** 04828 Kramer J CANVAS 01/03-01/28

Fully Online Instruction. Students are required to log in to Canvas by the first day of class for detailed information and required course work. [sccollege.edu/Canvas](http://sccollege.edu/Canvas). There will be no scheduled instructional meetings. This class uses open sources where the textbook and the access code for online instruction are free to the student. Details about the online materials may be emailed to students up to one week before the first class meeting. IBA - This course's assignments may be assigned, completed, and submitted via the internet.

## PHILOSOPHY (PHIL)

**PHIL 106, INTRODUCTION TO PHILOSOPHY 3.0 UNITS**

*A survey of historical and contemporary ideas on how to live the good life.*

**C** 04280 9:00a-12:20p M Tu W Th Granitto J H-113 Full Semester

This class will meet on campus.

## POLITICAL SCIENCE (POLT)

**POLT 101, AMERICAN GOVERNMENT AND POLITICS 3.0 UNITS**

*Study of United States national government and California state and local governments. Satisfies graduation requirement for American institutions and state requirements for California state government.*

**O** 04273 Shekarabi N CANVAS Full Semester

Students are required to log in to Canvas by the first day of class for detailed information and required course work. [sccollege.edu/Canvas](http://sccollege.edu/Canvas). There will be no scheduled instructional meetings.

**O** 04274 Shekarabi N CANVAS Full Semester

Students are required to log in to Canvas by the first day of class for detailed information and required course work. [sccollege.edu/Canvas](http://sccollege.edu/Canvas). There will be no scheduled instructional meetings.

**O** 04275 Crammer C CANVAS Full Semester

Fully Online Instruction. Students are required to log in to Canvas by the first day of class for detailed information and required course work. [sccollege.edu/Canvas](http://sccollege.edu/Canvas). There will be no scheduled instructional meetings.

**O** 04276 Crammer C CANVAS Full Semester

Students are required to log in to Canvas by the first day of class for detailed information and required course work. [sccollege.edu/Canvas](http://sccollege.edu/Canvas). There will be no scheduled instructional meetings.

**O** 04277 Carpio B CANVAS Full Semester

Students are required to log in to Canvas by the first day of class for detailed information and required course work. [sccollege.edu/Canvas](http://sccollege.edu/Canvas). There will be no scheduled instructional meetings.

**O** 04278 Carpio B CANVAS Full Semester

Students are required to log in to Canvas by the first day of class for detailed information and required course work. [sccollege.edu/Canvas](http://sccollege.edu/Canvas). There will be no scheduled instructional meetings.

## PSYCHOLOGY (PSYC)

**PSYC 100, INTRODUCTION TO PSYCHOLOGY 3.0 UNITS**

*An introduction to the major theories, methods, concepts, ethical issues, and findings in the major fields in psychology including (but not limited to): research methods, biological bases of behavior, perception, learning, memory, cognition, emotion, motivation, development, personality, social, and abnormal psychology.*

05520 9:30a-12:50p M Tu W Th Hager S H-324 Full Semester

**O** 05519 Cannon C CANVAS Full Semester

Students are required to log in to Canvas by the first day of class for detailed information and required course work. [sccollege.edu/Canvas](http://sccollege.edu/Canvas). There will be no scheduled instructional meetings.

**PSYC 157, INTRODUCTION TO CHILD PSYCHOLOGY 3.0 UNITS**

*Survey of human development from conception through adolescence. Covers major theories of development (cognition, perception, language, personality, etc.) and their application to parenting, teaching, and other interactions with children. (No credit if student has taken Child Development 107.)*

**O** 05521 Cannon C CANVAS Full Semester

Students are required to log in to Canvas by the first day of class for detailed information and required course work. [sccollege.edu/Canvas](http://sccollege.edu/Canvas). There will be no scheduled instructional meetings.

SECT #	TIME	DAY	INSTRUCTOR	MODE	DATES
--------	------	-----	------------	------	-------

**PSYC 240, INTRODUCTION TO SOCIAL PSYCHOLOGY 3.0 UNITS**

*An exploration of individual human behavior in relation to the social environment, examining the power of the situation, social interaction and social groups. Emphasized topics will include: aggression, prejudice, attraction, attitudes, group dynamics, self-development and social cognition. (No credit if student has taken Sociology 240.)*

**O** 05522 Umali Kopp C CANVAS Full Semester

Students are required to log in to Canvas by the first day of class for detailed information and required course work. [sccollege.edu/Canvas](http://sccollege.edu/Canvas). There will be no scheduled instructional meetings.

**PSYC 250, INTRODUCTION TO ABNORMAL PSYCHOLOGY 3.0 UNITS**

*This course is an introduction to the scientific study of psychopathology and atypical behaviors. An investigation of abnormal behavior from an integrative approach utilizing the biological, psychological and sociocultural perspectives. A comprehensive survey of theory and research in abnormal psychology with identification, etiology, intervention and prevention being presented.*

Prerequisite: Psychology 100/100H

**O** 05523 Breeden E CANVAS Full Semester

Students are required to log in to Canvas by the first day of class for detailed information and required course work. [sccollege.edu/Canvas](http://sccollege.edu/Canvas). There will be no scheduled instructional meetings.

## SOCIOLOGY (SOC)

**SOC 100, INTRODUCTION TO SOCIOLOGY 3.0 UNITS**

*The scientific study of human societies and behavior focusing on the process of social interaction, patterns of social inequality, and the influence of social institutions on individuals as members of social groups. Special emphasis provided to explain factors promoting social stability and social change.*

**O** 07145 Gause T CANVAS Full Semester

Students are required to log in to Canvas by the first day of class for detailed information and required course work. [sccollege.edu/Canvas](http://sccollege.edu/Canvas). There will be no scheduled instructional meetings.

**O** 07148 Siddiqui S CANVAS Full Semester

Students are required to log in to Canvas by the first day of class for detailed information and required course work. [sccollege.edu/Canvas](http://sccollege.edu/Canvas). There will be no scheduled instructional meetings.

**O** 07149 Siddiqui S CANVAS Full Semester

Students are required to log in to Canvas by the first day of class for detailed information and required course work. [sccollege.edu/Canvas](http://sccollege.edu/Canvas). There will be no scheduled instructional meetings.

**SOC 130, RELATIONSHIPS, MARRIAGES, AND FAMILY DYNAMICS 3.0 UNITS**

*In-depth examination of the process of developing intimate relationships leading to committed partnerships and marriages with emphasis on effective communication techniques, understanding relationship dynamics, parenting, diverse family systems and overcoming family stressors at each life stage.*

**O** 07153 Govea-Von Velasco M CANVAS Full Semester

Students are required to log in to Canvas by the first day of class for detailed information and required course work. [sccollege.edu/Canvas](http://sccollege.edu/Canvas). There will be no scheduled instructional meetings.

**The Lorenzo A. Ramirez Library is open**

**Monday – Thursday**

**(Jan. 3rd-Jan.27) during Intersession!**

Access Wi-Fi, PC/MAC computers, study tables/  
rooms, course reserves, library research help and  
much more!

Please check the library's website at  
[www.sccollege.edu/library](http://www.sccollege.edu/library) for current hours.



# Santiago Canyon College

8045 East Chapman Avenue • Orange, CA 92869 • [www.sccollege.edu](http://www.sccollege.edu) • 714-628-4900

---

RSCCD BOARD OF TRUSTEES: Phillip E. Yarborough, President • Tina Arias Miller, Ed.D., Vice President

David Crockett, Clerk • John R. Hanna • Zeke Hernandez • Lawrence "Larry" R. Labrado

Sal Tinajero • Elisabeth Neely, Student Trustee

CHANCELLOR: Marvin Martinez • SANTIAGO CANYON COLLEGE: Pamela Ralston, Ph.D.