



**Issue**



The steps below show how to download, install and sign-in to the Adobe Creative Cloud on a personal device (such as a laptop or home computer) using your RSCCD email address.

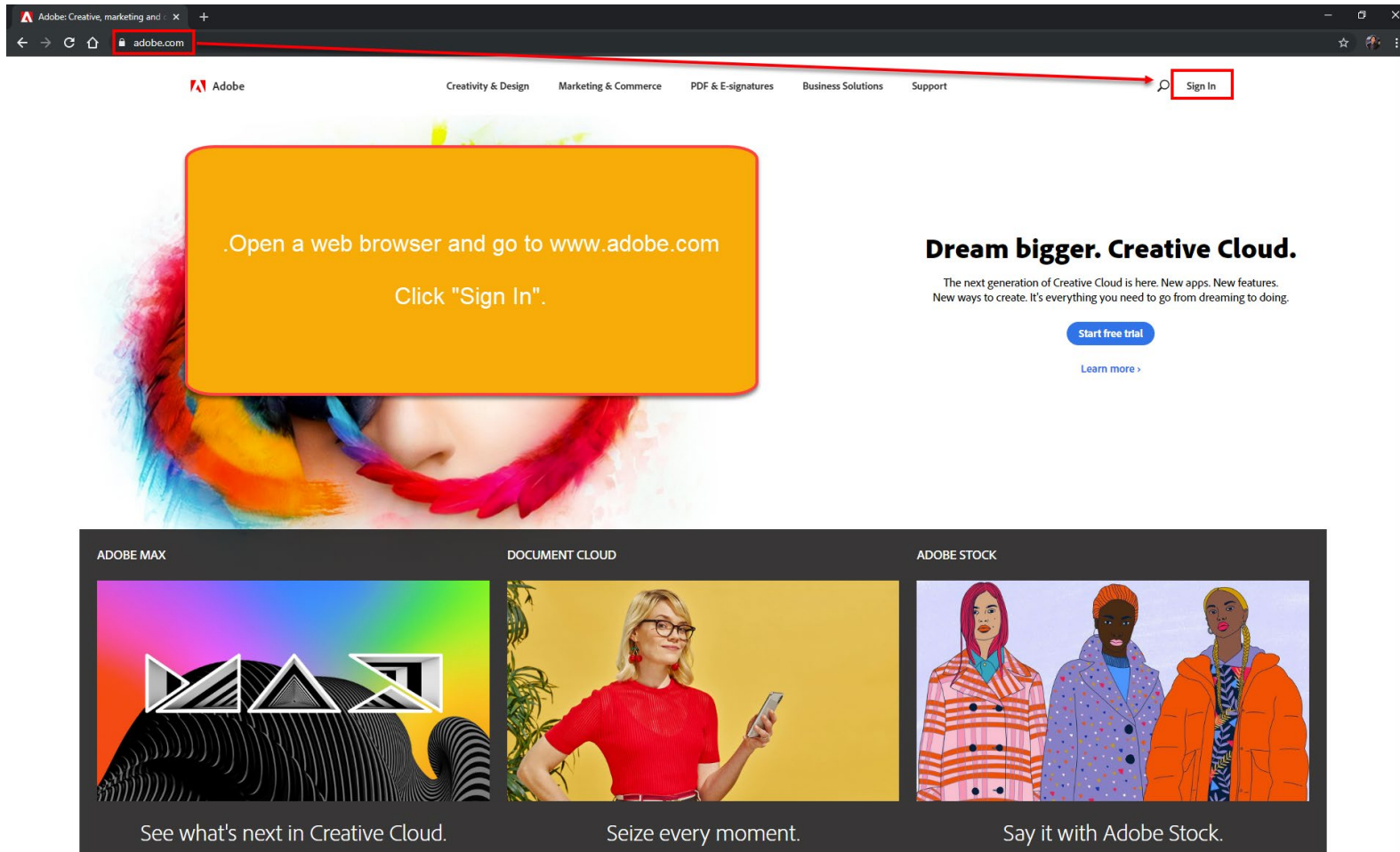
- Adobe Creative Cloud is the platform that allows you to install programs such as Adobe Acrobat, Photoshop, Premiere Pro, etc.
- You are allowed to sign-in on **up to 2 devices** with the Adobe Creative Cloud using your RSCCD email address, whether on a District-owned device or home device. Signing in to a 3<sup>rd</sup> device will prompt you to log out of one of your devices.
- You will be able to sign-in and use the Adobe Creative Cloud for as long as you are an active faculty or staff member with an RSCCD email address.

**NOTE: As of May 7 2020 --- Adobe has granted access to its suite of Creative Cloud apps to students, through to July 6 2020. Any changes to the end date will be communicated when we have more information.**

**Step 1**

Open a web browser and go to [www.adobe.com](http://www.adobe.com)

Click "Sign In".



## Step 2

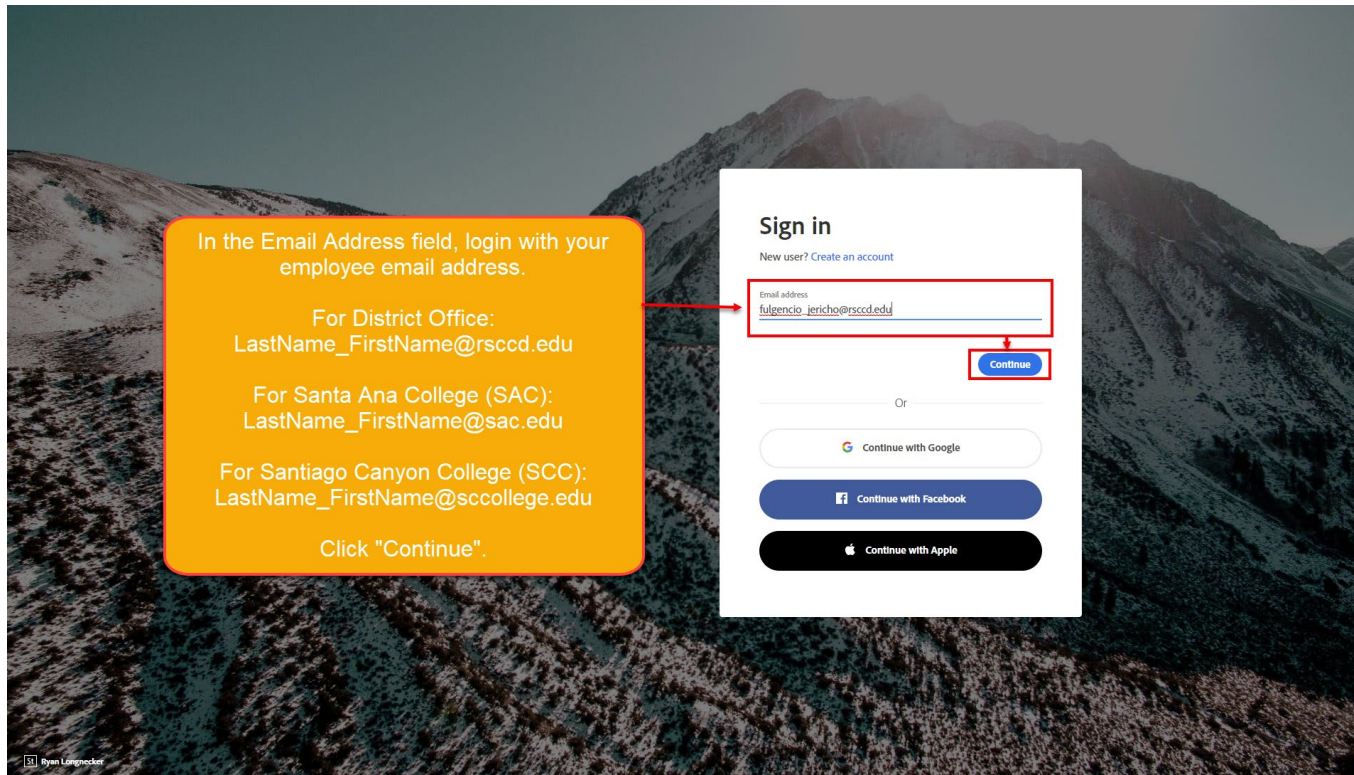
In the Email Address field, login with your employee email address.

- For District Office: [LastName\\_FirstName@rsccd.edu](mailto:LastName_FirstName@rsccd.edu)
- For Santa Ana College (SAC): [LastName\\_FirstName@sac.edu](mailto:LastName_FirstName@sac.edu)
- For Santiago Canyon College (SCC): [LastName\\_FirstName@sccollege.edu](mailto:LastName_FirstName@sccollege.edu)

**NOTE: Students will use the email format [WebAdvisorID@student.sac.edu](mailto:WebAdvisorID@student.sac.edu) or [WebAdvisorID@student.sccollege.edu](mailto:WebAdvisorID@student.sccollege.edu)**

**For example, if your WebAdvisor ID is ab12345, your login would be [ab12345@student.sac.edu](mailto:ab12345@student.sac.edu) or [ab12345@student.sccollege.edu](mailto:ab12345@student.sccollege.edu)**

Click "Continue".



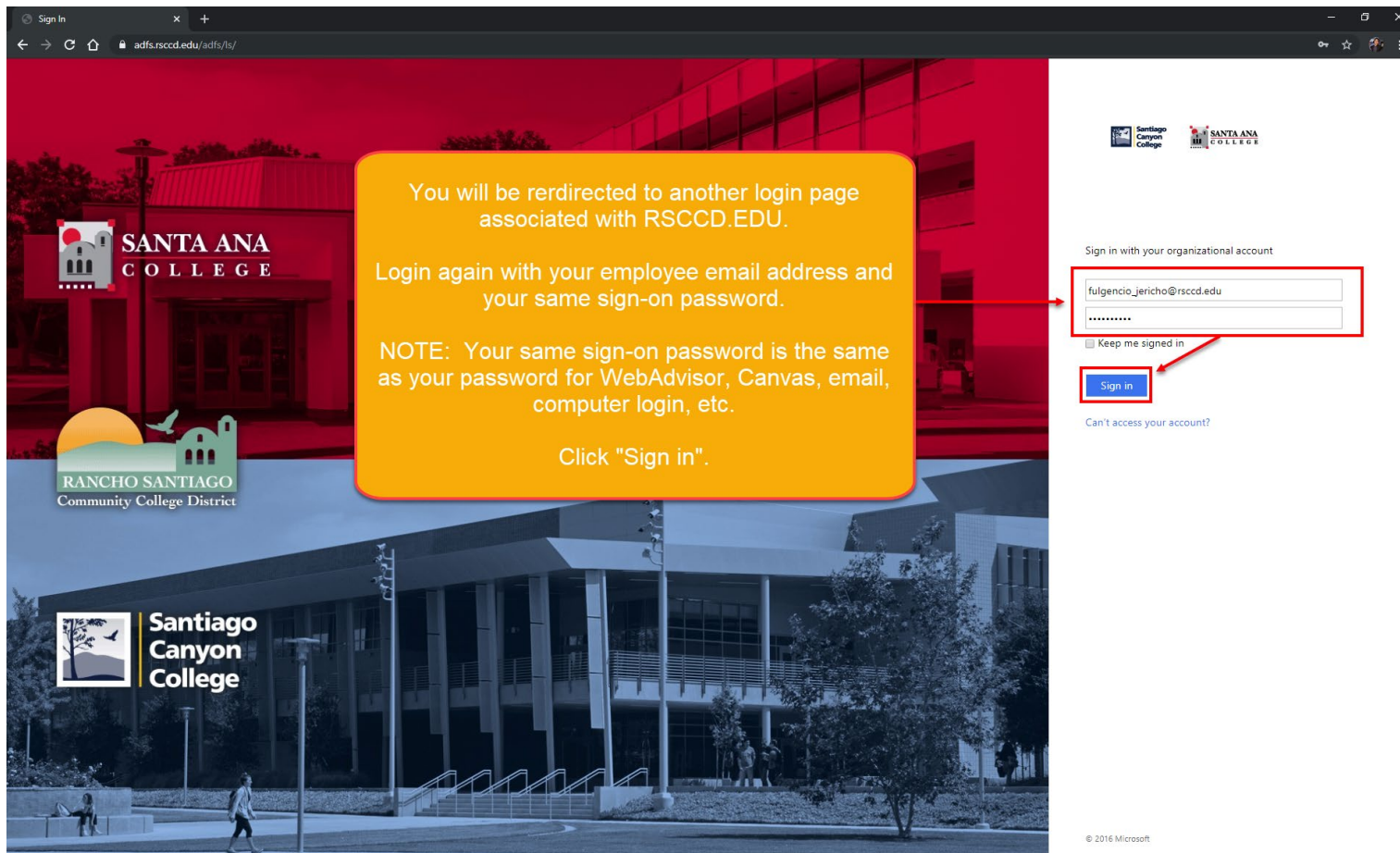
**Step 3**

You will be redirected to another login page associated with RSCCD.EDU.

Login again with your employee email address and your same sign-on password.

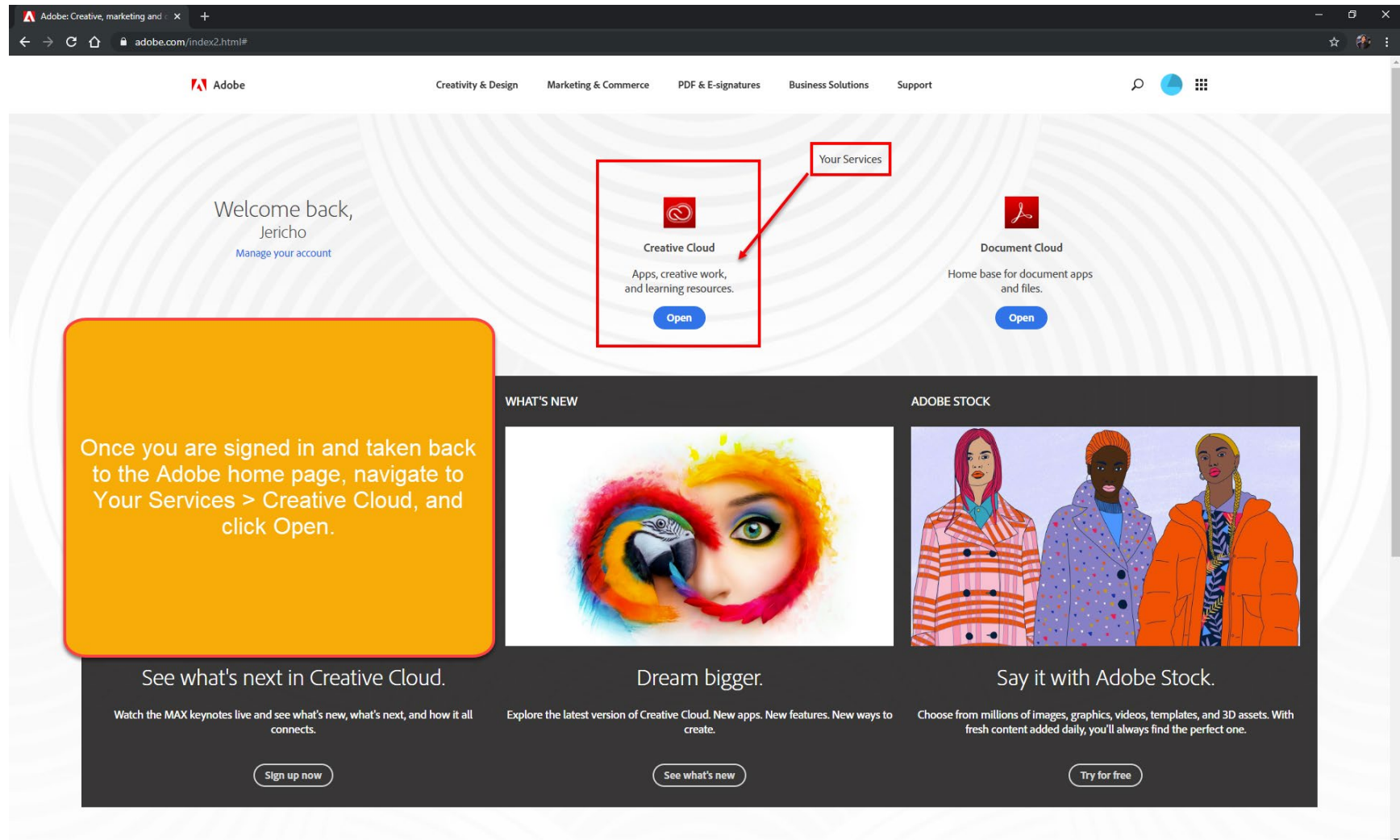
NOTE: Your same sign-on password is the same as your password for WebAdvisor, Canvas, email, computer login, etc.

Click “Sign In”.



**Step 4**

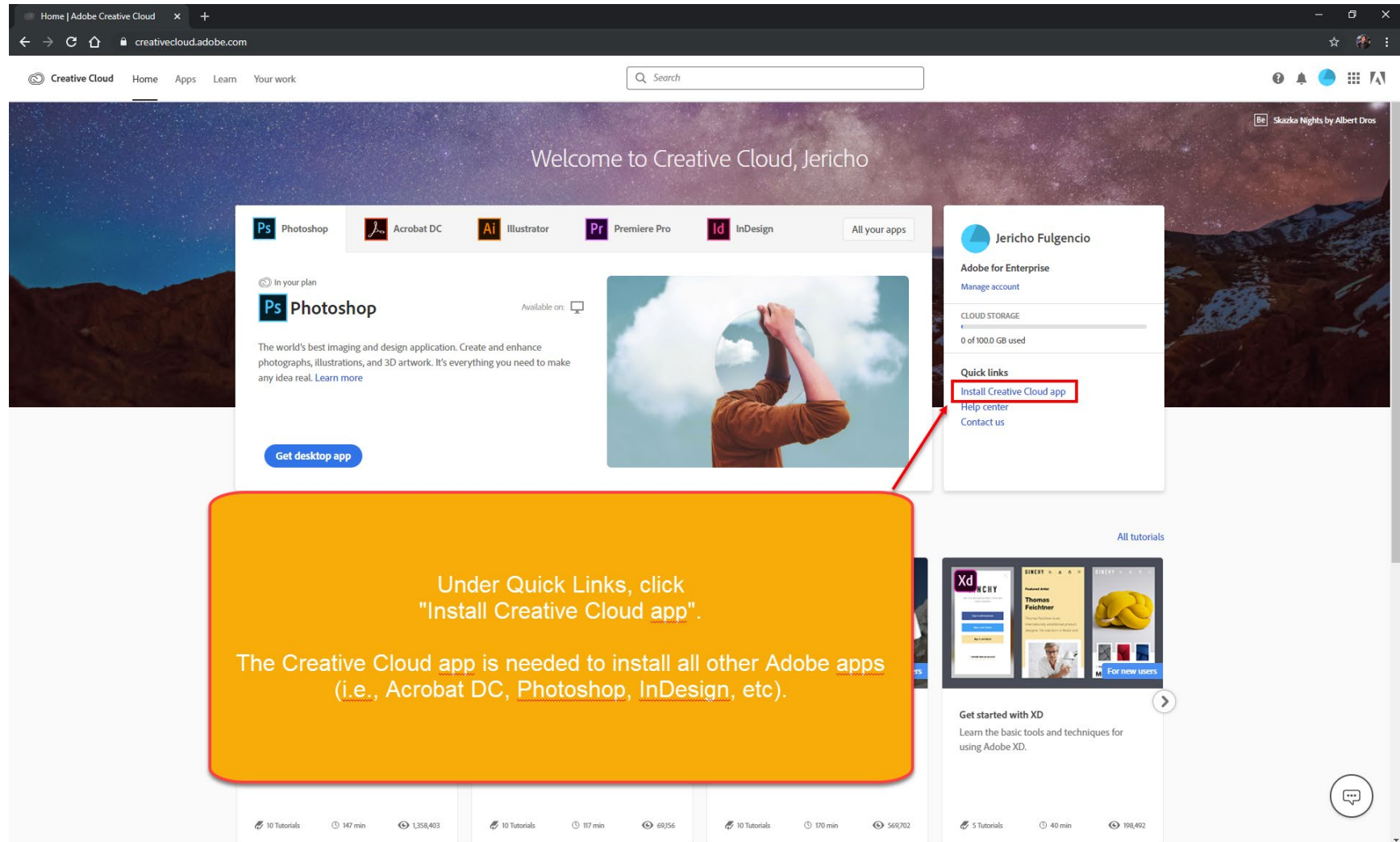
Once you are signed in and taken back to the Adobe home page, navigate to Your Services > Creative Cloud, and click Open.



**Step 5**

Under Quick Links, click “Install Creative Cloud app”.

The Creative Cloud app is needed to install all other Adobe Apps (i.e., Acrobat DC, Photoshop, InDesign, etc).

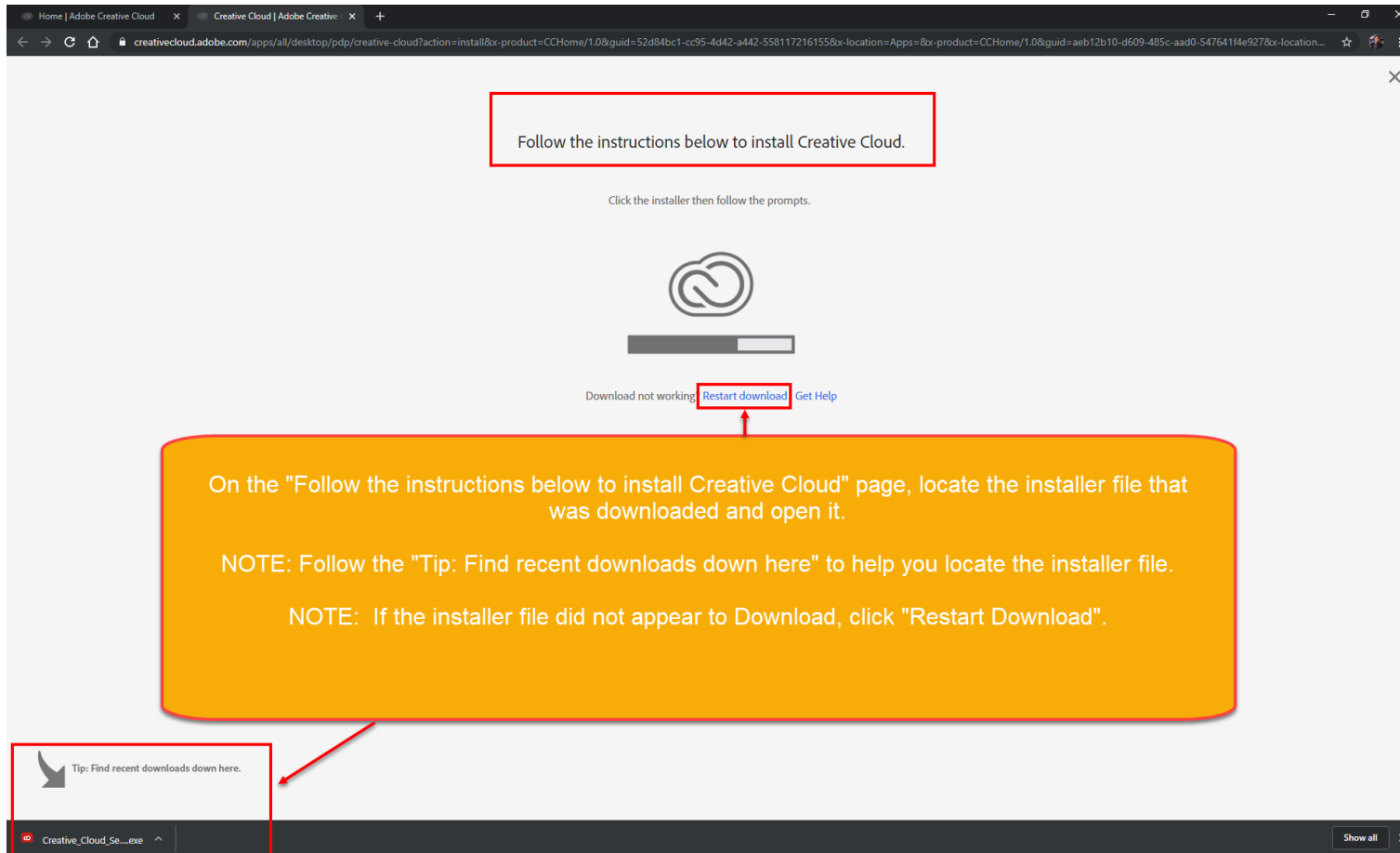


**Step 6**

On the “Follow the instructions below to install Creative Cloud” page, locate the installer file that was downloaded and open it.

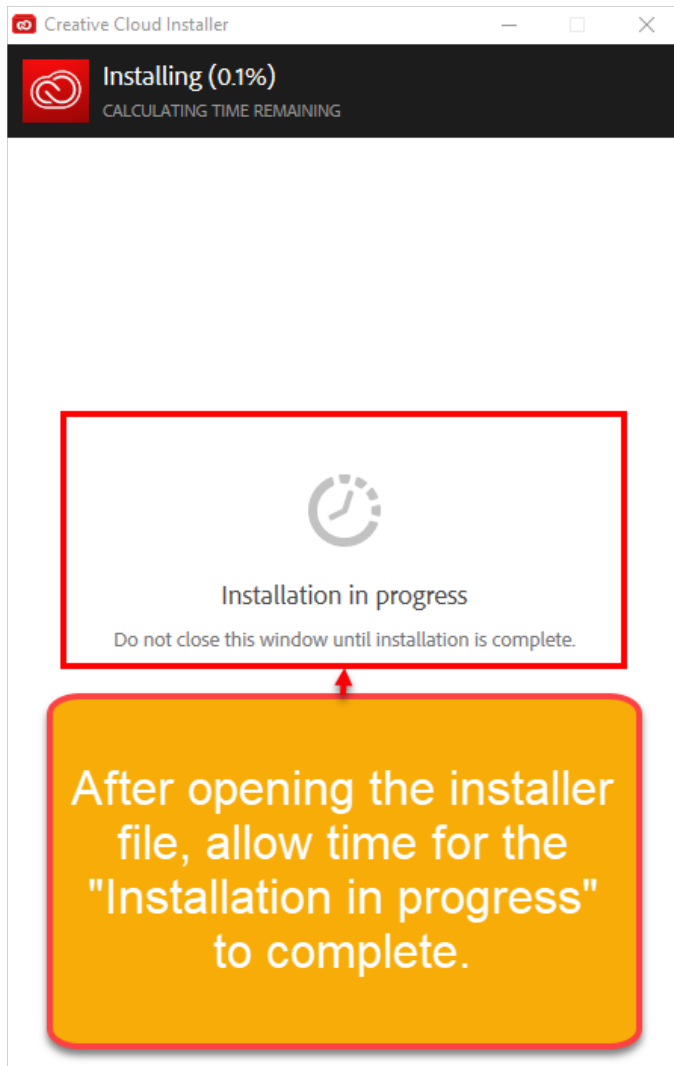
NOTE: Follow the “Tip: Find recent downloads down here” to help you locate the installer file.

NOTE: If the installer file did not appear to Download, click “Restart Download”.



**Step 7**

After opening the installer file, allow time for the “Installation in progress” to complete.





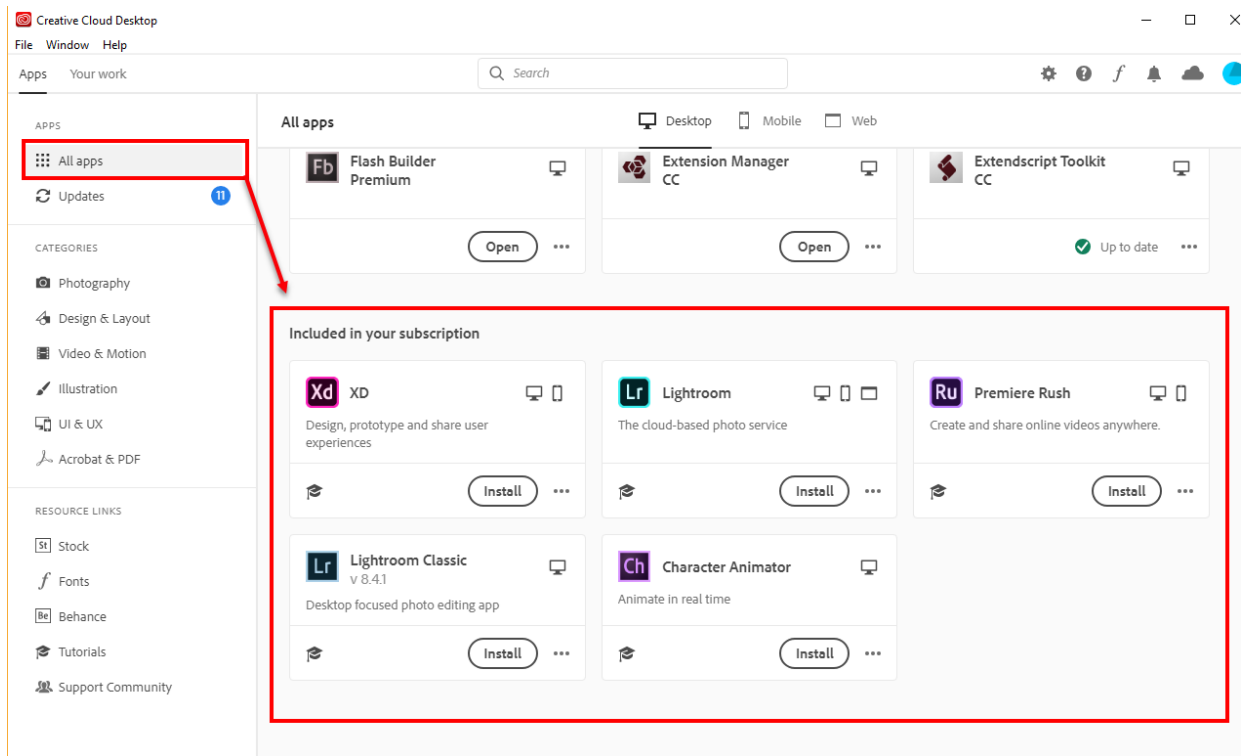
### Step 8

After the installer completes, the Creative Cloud Desktop app will open.

The “All Apps” category shows all of the available apps that come with your subscription.

The section for “Included in your subscription” shows all of the apps that are still available for installation.

Click the “Install” icon for any of these apps to install them on your device.



After the installer completes, the Creative Cloud Desktop app will open.

The "All Apps" category shows all of the available apps that come with your subscription.

The section for "Included in your subscription" shows all of the apps that are still available for installation.

Click the "Install" icon for any of these apps to install them on your device.