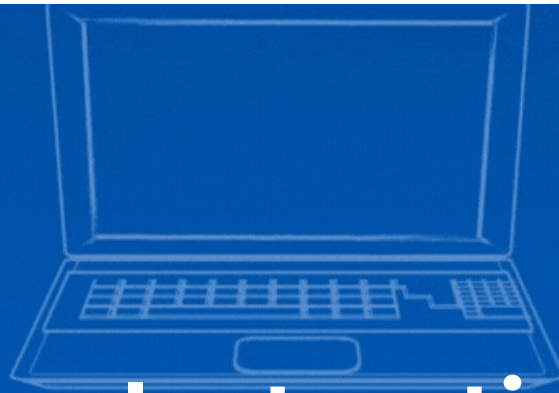


[Accreditation](#)[Apply](#)[Calendars](#)[Directory](#)[Library](#)[Translate](#)[WebAdvisor](#)[Self-Service](#)[SEARCH](#) 

# Santiago Canyon College



## Instructional Design Center

[Instructional Design Center](#) / **Instructional Design Center**

# Welcome to The IDC @ SCC!

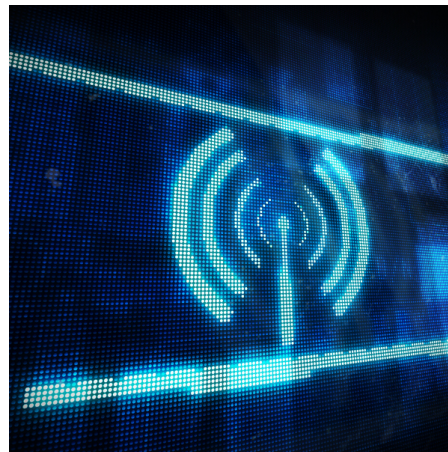
## Supporting Faculty and Staff in the Creative Process

The mission of The IDC @ SCC is to support faculty and staff in the creative process by offering assistance in course design and development to ensure engaging, innovative and accessible learning experiences for students. The IDC @ SCC is a faculty and staff focused work area designed to support life-long learning and promote effective implementations of instructional technology, instructional design, and collaboration with colleagues in an open discussion about effective teaching practices. The IDC @ SCC also hosts workshops and events, and provides one on one support in a variety of areas.



### **Online Events**

Workshops/Tech Bar



### **Online Resources**

Resources for Faculty/Staff



### **Distance Education**

Distance Education Office

## IDC FAQs

– What is Instructional Design?

According to the [Instructional Design Central](https://www.instructionaldesigncentral.com/) website, instructional design is the systematic process or processes in which instructional materials are designed, developed, and delivered.

**More about the course design process:****Analyze**

In the analysis phase of the ADDIE Model the instructional problem is identified. The instructional goals, success metrics, and overall objectives are also established. Information regarding the learner such as the learning environment, preferences, demographics, and existing knowledge and skills are also identified during this phase.

**Design**

The design phase of the ADDIE Model nails down learning objectives, instructional methods and activities, storyboards, content, subject matter knowledge, lesson outlines, and media assets.

**Develop**

The development phase of the ADDIE Model is where instructional designers develop the content and learning interactions outlined in the design phase. During this phase, content is written and graphics, audio, and photography are also produced and assembled.

**Implement**

During the implementation part of the ADDIE Model, the instructional designer delivers the content and materials to Learning Management Systems (LMS) or directly to the trainer for live training events. The instructional designer also provides training needed to trainers, facilitators, SME's or instructors.

**Evaluate**

During the evaluation phase of the ADDIE Model, the instructional designer determines what success will look like and how it will be measured. Often times, the evaluation consists of two phases: formative and summative. Formative evaluation is iterative and is done throughout the design and development processes. This occurs all throughout the ADDIE process. Summative evaluation consists of tests that are done after the training materials are delivered. The results from these test help to inform the instructional designer and stake holders on whether or not the training accomplished its original goals outlined in the analysis phase.

**Source:** <https://www.instructionaldesigncentral.com/>

**+ What's Inside The IDC?****+ What Support is Availble at The IDC?**

## + Does The IDC Offer Department Workshops?



### Contact IDC:

**Phone:** (714) 628-4830

**E-mail:** [IDC@sccollege.edu](mailto:IDC@sccollege.edu)

**On Campus Location:** SCC L-109

#### **Amanda Carpenter**

Distance Education Services Specialist

[carpenter\\_amanda@sccollege.edu](mailto:carpenter_amanda@sccollege.edu)

#### **Silvia Lopez**

Instructional Design Center Specialist

[lopez\\_silvia@sccollege.edu](mailto:lopez_silvia@sccollege.edu)

#### **Patty Lupercio**

Instructional Design Center Technician

[lupercio\\_patricia@sccollege.edu](mailto:lupercio_patricia@sccollege.edu)



**24/7 Canvas Support:**  
(844) 629-6834



**Tech Tips**

[Accessibility](#)

Santiago Canyon College • 8045 E. Chapman Ave. • Orange, CA 92869 • 714.628.4900

**Santiago Canyon College**

Santiago Canyon College is part of the [Rancho Santiago Community College District](#) and is accredited by the [Accrediting Commission for Community and Junior Colleges](#).

[Discrimination and Harassment Complaints and Investigations](#) | [Non-Discrimination Policy](#)